



**RANDAL  
STEGMEYER**  
Exposing the Past

# The Kelsey Museum of Archaeology



1



2



3



4



5



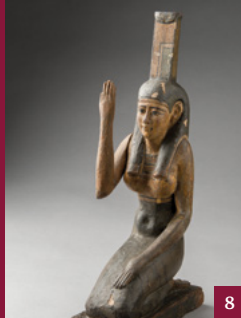
6



11



7



8



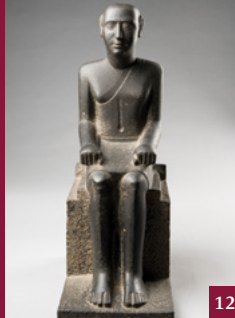
9



10



11



12



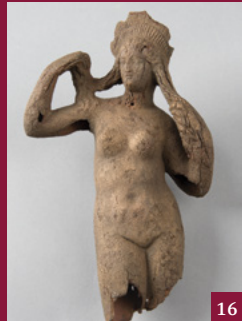
13



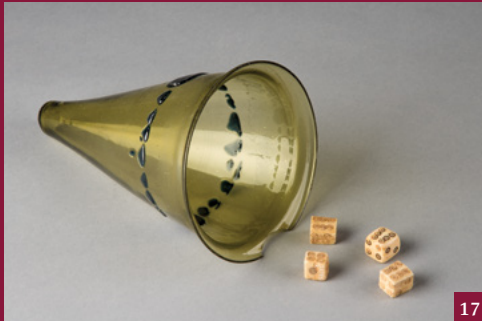
14



15



16



17



18



19



20

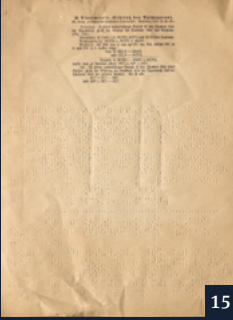
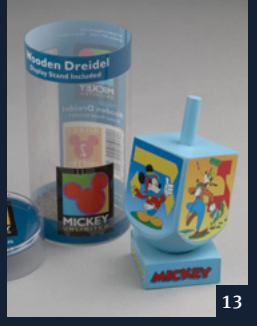
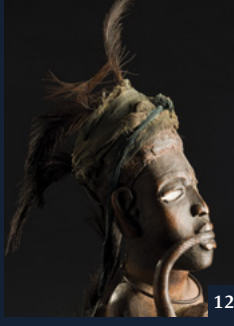
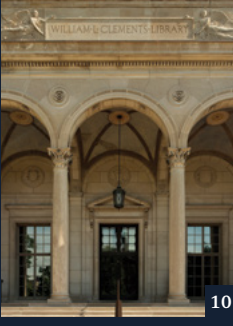
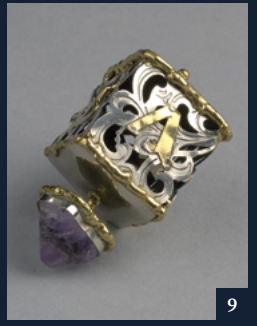
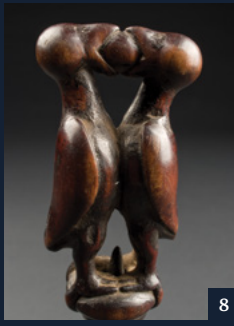
1. Coffin of Djehutymose: exterior of lid (KM 1989.3.1)
2. Marble portrait of the emperor Augustus (KM 1975.1.1)
3. Roman cinerary urn (KM 88860)
4. Textile and jar filter with rabbit designs (KM 22645, 1969.2.120)
5. Statuette of a seated woman (KM 16118)
6. Ancient mud brick from Karanis (KM 29751)
7. Steatite stomach amulet (KM 1963.4.8)
8. Statuette of the goddess Nephthys (KM 2001.1.1)
9. Wine flask and cups (KM 5936, 5965, 5966)
10. Figurine of a boy carrying a jar, embedded in brick (KM 2018.1.102)
11. Coffin of Djehutymose: interior of lid (KM 1989.3.1)
12. Statue of an Egyptian priest (KM 8218)
13. Wooden jackal figure (KM 1971.2.185)
14. Oinochoe with handle (KM 26776)
15. Head of a man with Egyptian hairstyle (KM 29108)
16. Bronze statuette of Aphrodite (KM 10888)
17. Conical lamp with dice (KM 5930, 22782–85)
18. Nested jars with coin hoard (KM 2018.1.457)
19. Mummy mask (KM 88778)
20. Hawk-headed crocodile (KM 25752)



# The University of Michigan



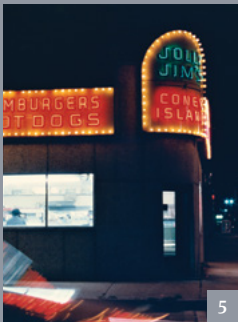
1. *Civil War diary of William Harrison Marshall, a soldier of the 18th Michigan Infantry Regiment* (Bentley Historical Library)
2. *Both sides of a single page from Marshall's diary* (Bentley Historical Library)
3. *Turned wood sculpture* (UMMA)
4. *Fragment of papyrus P.Mich.inv. 1912, in color and infrared* (U-M Papyrology Collection)
5. *Chinese Bencharong ware jar (tho)* (UMMA)
6. *Samurai armor and helmet with Paulownia crests* (UMMA)
7. *Slant of Light = Sesgo de luz, by Emily Dickinson, Jorge Yglesias, and Jordan Estevez, 1998* (U-M Special Collections)
8. *Vili antelope-horn whistle (msiba)* (UMMA)
9. *Gold, silver, and amethyst dreidel* (U-M Special Collections)
10. *Clements exterior* (William L. Clements Library)
11. *Page from The Elephant's Head: Studies in the Comparative Anatomy of the Organs of the Head of the Indian Elephant and Other Mammals, by J. E. V. Boas, 1908* (U-M Special Collections)
12. *Yombe power figure (nkisi nduda)* (UMMA)
13. *Mickey Mouse dreidel* (U-M Special Collections)
14. *Clements interior* (William L. Clements Library)
15. *Page from the Sammelmappe aller deutsch- und fremdsprachlichen Systeme der Blindenschrift [Collection of all German and foreign-language Braille systems], published by the Marburg University Library, Secondary School, and Advice Center for Blind Students, 1923* (Buhr Remote Shelving Facility)
16. *Boxes used to ship papyri from Karanis, Egypt* (U-M Papyrology Collection)





# The World Beyond

1. *Drying Fish, Amsterdam, 2000*
2. *Castle Ruins, Barr, France, 2000*
3. *Testamentary Gift, Bagley Memorial Fountain, Detroit, 1989*
4. *Rose, Detroit, 1987*
5. *Woodward Coney, Detroit, 1989*
6. *Living Room of Frank Lloyd Wright's Palmer House, Ann Arbor, 2007*
7. *Wellness Bus, West Grand Boulevard, Detroit, 1988*
8. *White Lotus Temple, Ann Arbor, 2007*



# Constellations



1. Ursa Major
2. South Sky
3. North Sky
4. Draco
5. Sea Monsters
6. Canis Major

Johann Elert Bode, *Uranographia, the Description of the Stars in Twenty Copper-plates Engraved According to the Most Recent and Accurate Observations of Astronomers*. Berlin: published by the author, 1801 (U-M Special Collections)

This volume is approximately 22" x 26" with each engraving a double-page spread. Capturing the fine detail of oversize objects requires multiple overlapping exposures that are then stitched together to create a single digital file capable of extreme enlargement without loss of detail.

# The Kelsey Building

1. Newberry Hall, 2017
2. Tiffany Window of Newberry Hall, 2017
3. Upjohn Wing, 2017

