



The Villas of Oplontis

Publication

The University of Texas at Austin

www.oplontisproject.org

Publication Goals

- Preservation of Villa A and its artifacts
- Easy, free access to scholars and the general public

The Solutions

A Three-pronged Approach to Publication

- Open Access e-book
- Navigable 3D model linked to—
- Online Database

Oplontis: Villa A (“of Poppaea”) at Torre Annunziata, Italy.

- I. The Ancient Setting and Modern Rediscovery
- II. Decorative Ensembles: Painting, Stucco,
Pavements, Sculptures
- III. Architecture and Material Culture, 2006-2010

Series: Humanities E-Book Series of the American Council of Learned Societies

<http://www.humanitiesebook.org/>

Volume 1. The Ancient Setting and Modern Rediscovery (2014)

ISBN-10: 1-59740-932-4

ISBN-13: 978-1-59740-932-2

Everything is Open Access

Type “oplontis heb” in browser
to “acquire” Oplontis publications



**Oplontis
Villa A ("of Poppaea")
at Torre Annunziata, Italy**

**Volume 1:
The Ancient Setting and Modern Rediscovery**

**Edited by John R. Clarke
and Nayla K. Muntasser**

**EBOOK**

Volume One

The Villa A Navigable 3D Model

Written in Unity©—a gaming engine—a first-person shooter interface

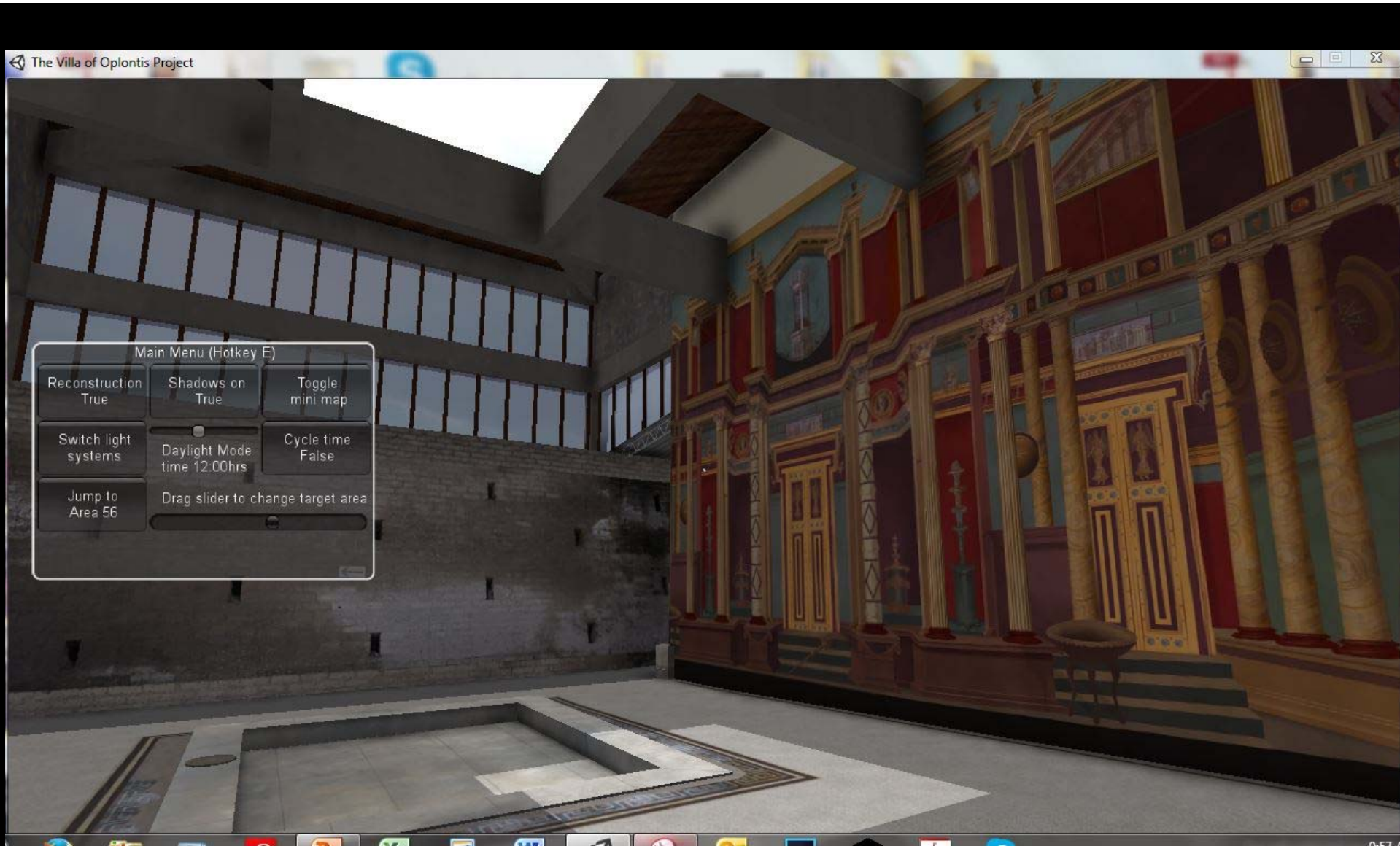
- Allows real-time navigation
- Linked to Oplontis Project online database
- Toggles between actual state and restored state
- A valuable research tool for everyone



Entering the atrium—actual state



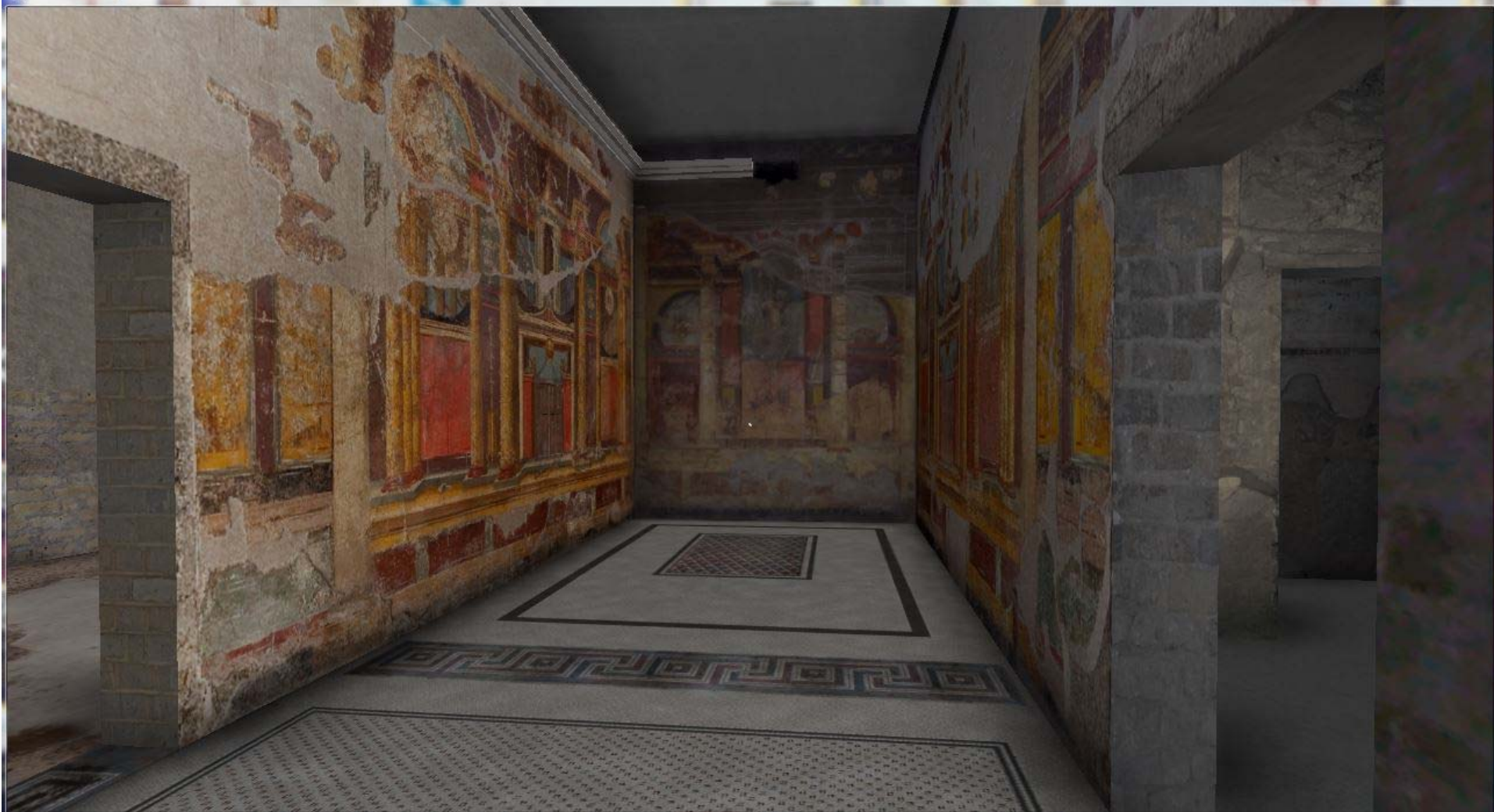
Entering the atrium—restored state



The atrium—noon



The atrium—8:45 a.m.



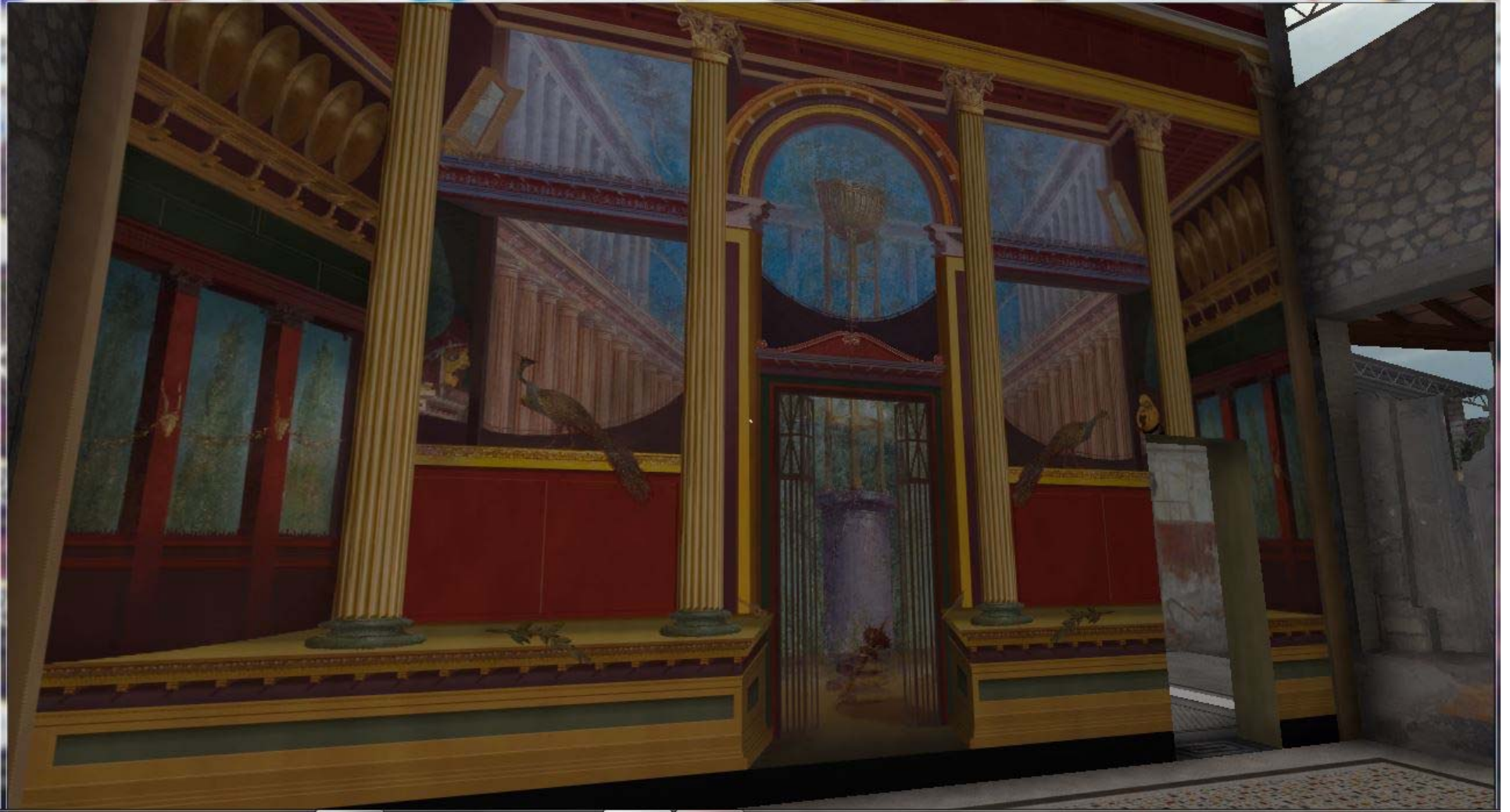
The dining room—actual state



The dining room—restored state



The large reception room (oecus)—actual state

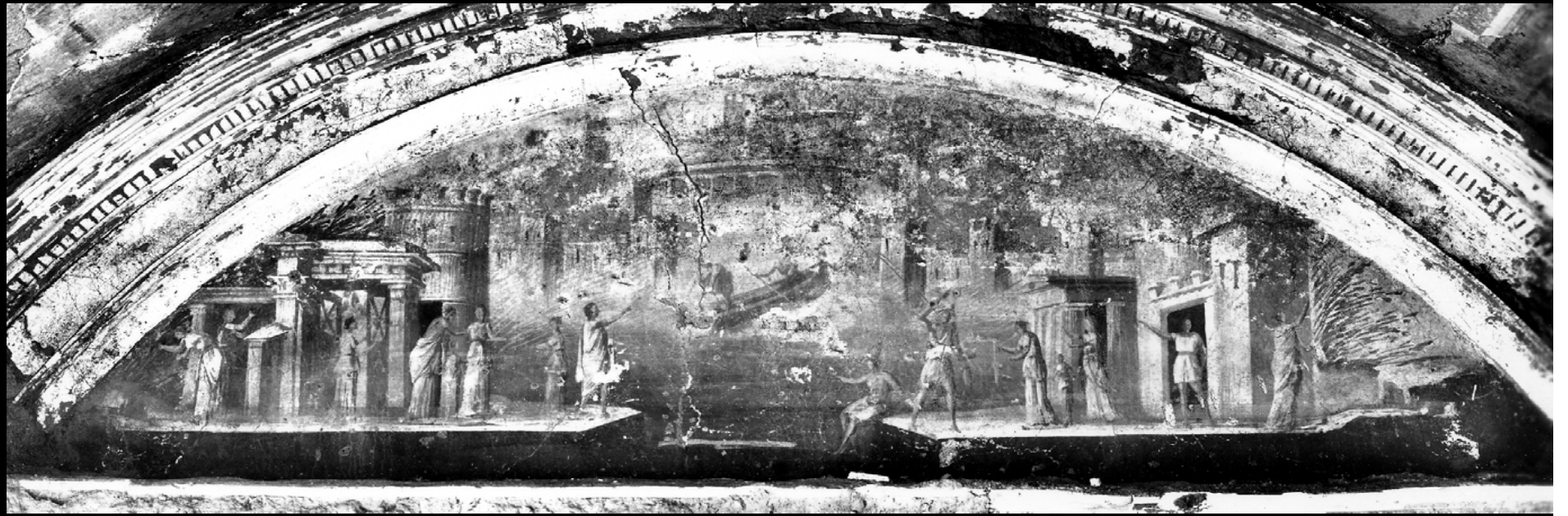


The large reception room (oecus)—restored state



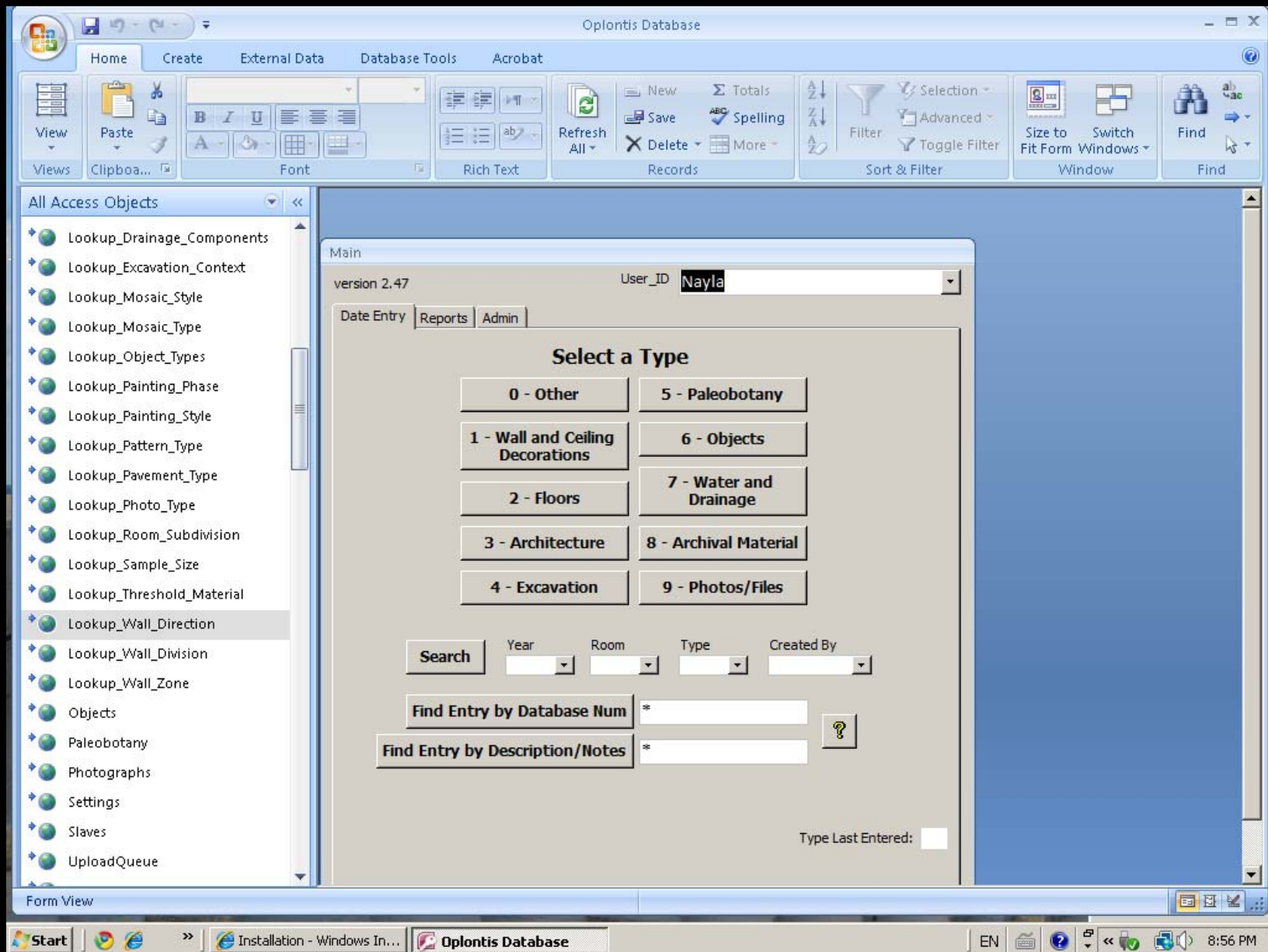
Archival photo of tympanum
landscape above alcove—now gone







The tympanum landscape in restored room



The Oplontis Project database—integrated with model or web-accessed

WALL AND CEILING DECORATION

1-Wall & Ceiling Decoration Status: **Edit** Replication ID: {107C67ED-1D65-4674-AE6A-D8A1CED0B4CC}

Database Number: 2010.005.01.00059 Created By: Regina Last Modified By: Regina

Year: 2010

Room: 5

Sequence: 59

Description: The decorative system of the east wall is a mirror reverse of the west wall (see west wall description for a detailed discussion of the decorative system). The wall section to the north of the central double doors, between the red niche and the second set of doors, is better preserved than on the west wall and offers more details. The section is conceived of as a distinct space behind the central podium and consists of a light purple/violet block or altar

Wall Direction: East Room Subdivision:

Wall Zone: Ceiling:

Wall Panel: Room Location: Observer Facing: Ceiling Division:

Horiz. Wall Division: Painting Style: Second

Ground Color: Painting Style Phase: Ic

Design Elements:

Revetment? No Plaster Mold? No

Revetment_Material: Database Num: 2010.005.01.00059

Photos/Files:

Catalog_Num	ImageName	UseAsThumbn:	Ext
2010.005.09.01114	5 East wall	Y	JPEG
<input type="text"/>	<input type="text"/>	<input type="text"/>	<input type="text"/>

Notes:

view hi-res view


Sample page: description of the painting of the atrium

WALL AND CEILING DECORATION

1-Wall & Ceiling De

Database Number: 2010.008
Year: 2010
Room: 5
Sequence:
Description: The deco
discussion
niche an
is concei
Wall Direction: East
Wall Zone:
Wall Panel:
Horiz. Wall Division:
Ground Color:
Design Elements:
Revetment?: No
Revetment_Material:
Photos/Files: Catalog
2010.008
view sele
Notes:

ViewPhoto
Scaled Image: https://webdav.austin.utexas.edu/oplontis/Oplontis/Images/005/scaled/2010_009_01114.JPG



Start | Installation - Windows In... | Oplontis Database | Document1 - Microsoft ... | EN | 9:00 PM

High-resolution photo linked to database

Oplontis Project Database, Floor, Atrium 5 (partial)





Floors

Room: * - (ALL Rooms) ▾

Query: Field: CatalogNum ▾ Size: 10 ▾

5 items found, displaying all items.

1

catalogNum	Thumbnail	Related Photos	description	notes	style	averageTessereSize	sampleNumInRoom	sampleLocation	sampleSize
2009.005.02.00004		<ul style="list-style-type: none"> 2009.005.09.01829 2009.005.09.02095 2009.005.09.02093 2009.005.09.01509 2009.005.09.02094 2009.005.09.01541 	Second Style atrium pavement in bias-laid white wi...	Four samples taken in this room.	Bias laid	0.0	0		
2009.005.02.00033		2009.005.09.00408	Tessera size sample. Black frame, North side, East...		Square laid	0.898	1	5.1. Black frame, North, East part, below East doo...	10x10 cm
2009.005.02.00034		2009.005.09.00409	Tessera size sample. North frame of white field, w...		Bias laid	1.091	2	5.2. White frame North, East part below East doorw...	10x10 cm
2009.005.02.00035		2009.005.09.00410	Tessera size sample. North side, central part, whi...	Tesserae in this sample were generally very large ...	Quasi Bias Laid	1.091	3	5.3. North, central part of carpet.	20x20 cm

Exploring the database for information on the floor of the atrium

Atrium floor, stitched overhead shot



Atrium Floor Meander, tessera count, 20 cm²

