

The image is a reconstruction painting of the Villa of the Papyri in Oplontis. It depicts a grand, multi-columned hall with a high ceiling. The columns are decorated with intricate floral and scrollwork patterns. The walls are covered in various frescoes, including circular medallions and architectural details. The floor is a light-colored stone or marble. The overall style is classical, with a focus on architectural grandeur and decorative elements.

The Villas of Oplontis

Excavation and Reconstruction

The University of Texas at Austin

www.oplontisproject.org



Excavations of south façade Villa A. October 2014-January 2016



Ceiling painting from the excavations



Studying 1,200 amphorae!

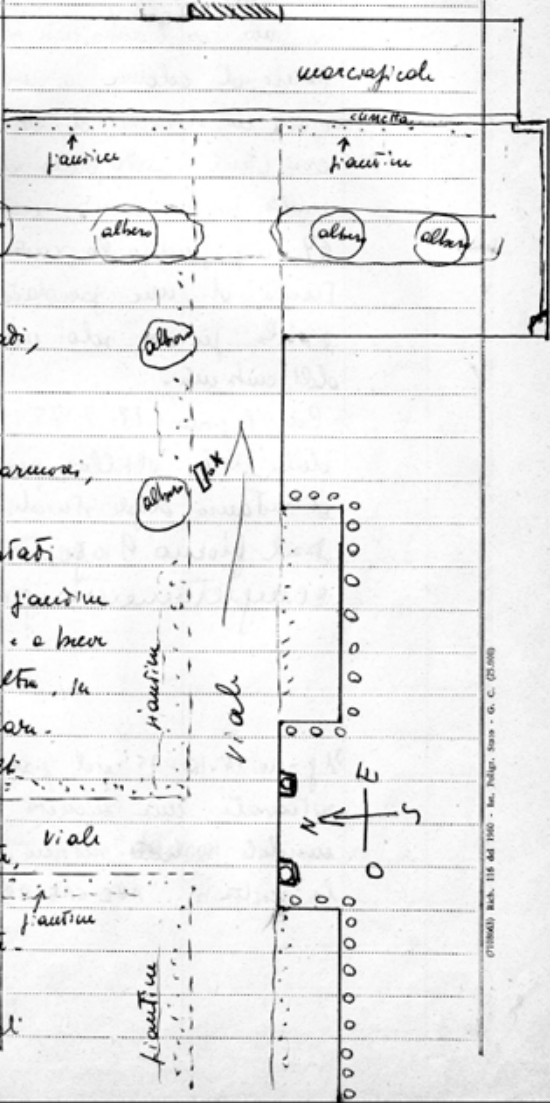


Earlier structures beneath barrel-vaulted room

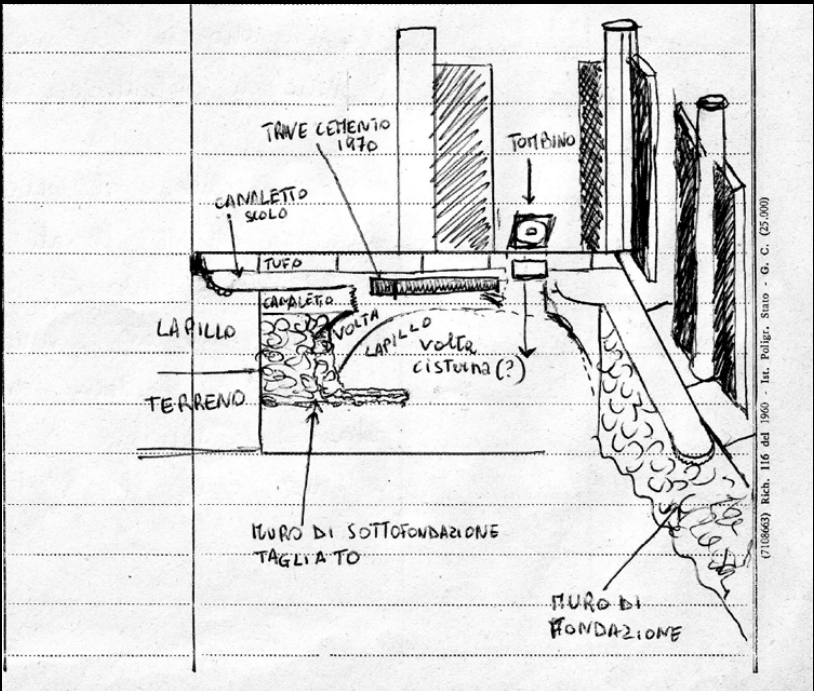


Roman street with superimposed phases

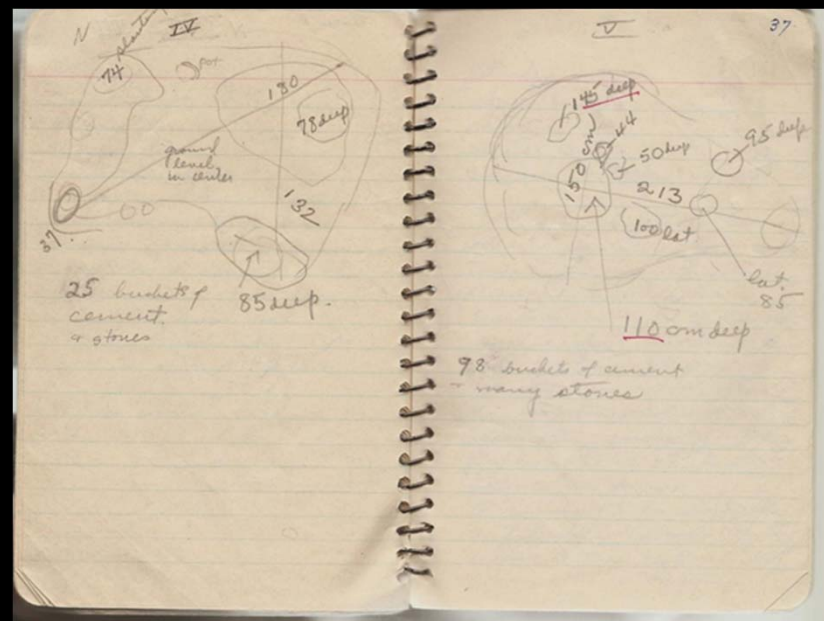


Data	Numero degli operai	Località e note speciali	DESCRIZIONE DEI TROVAMENTI
			
			<p> oculati restati in moduli: in due banchi sulle parti: restati in una crociata: nelle una, piaceri occulti alle file, coniate, nel punto X ⇒. </p> <p> Tra i fossati restati, molte rovine spollate, arcaica di cuneo, piccoli fossati marmorei, penali di anfora. </p> <p> Nel giardino 59 sono stati ritrovati 8 fiaschi di giardinie posti in direzione NS e a distanza l'una dall'altra, in maniera molto regolare. </p> <p> Sono stati trovati molti aut. fine, delle quali: ni in del tipo a palmette, una a testa di dride, una a testa di palmette. Coste per i fossati, costumi lo sono negli </p>

CITTADELLA - 116 del 1960 - Mr. Polign. Sisto - G. C. (25.000)



CITTADELLA - 116 del 1960 - Mr. Polign. Sisto - G. C. (25.000)



Excavation notebooks



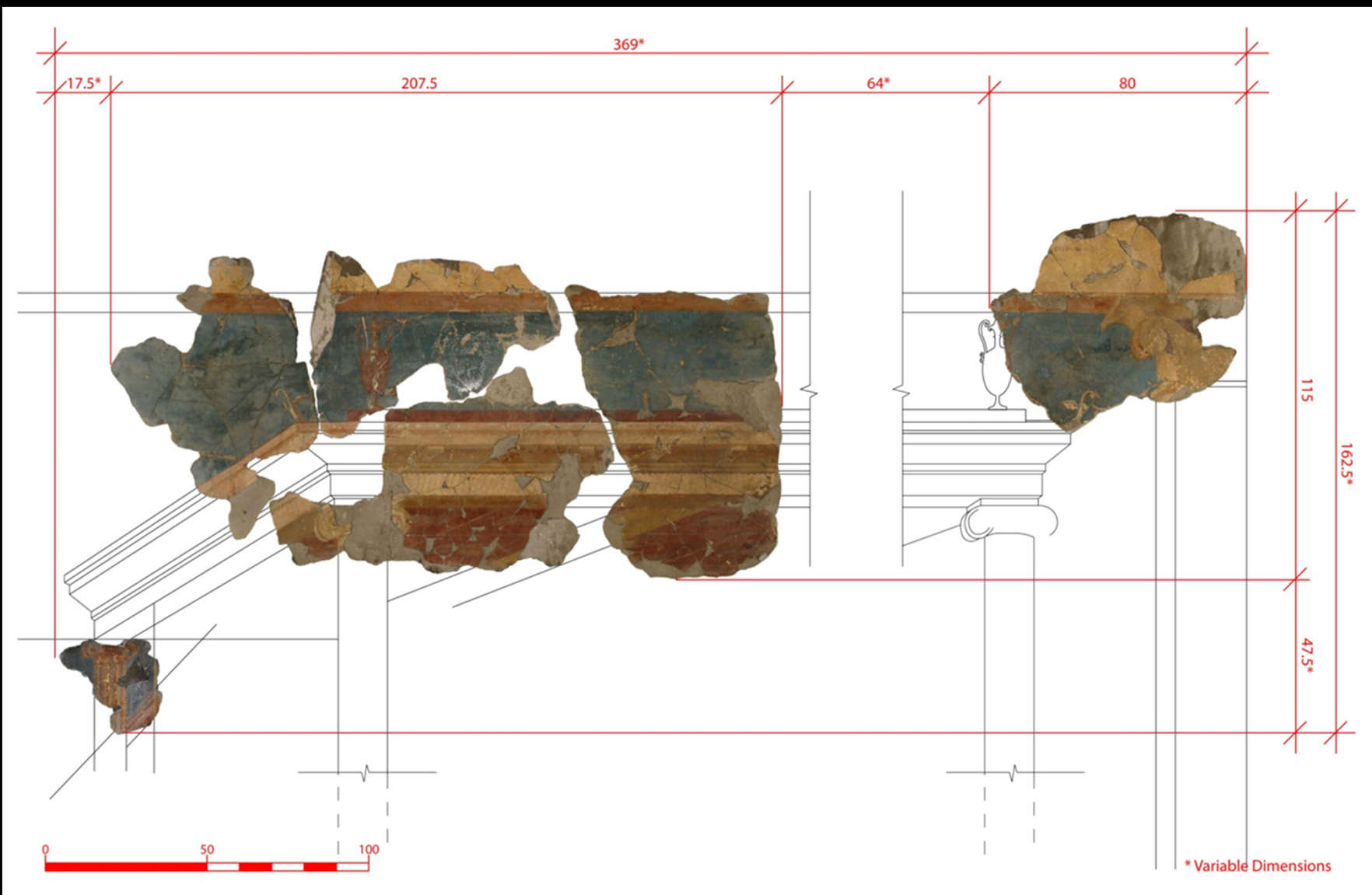
Storerooms



Valuable photographs reveal reconstructions: top 1978. lower left: 1968; lower right, 2009



Orphaned Fragments from atrium 5...



Orphaned fragments fit together



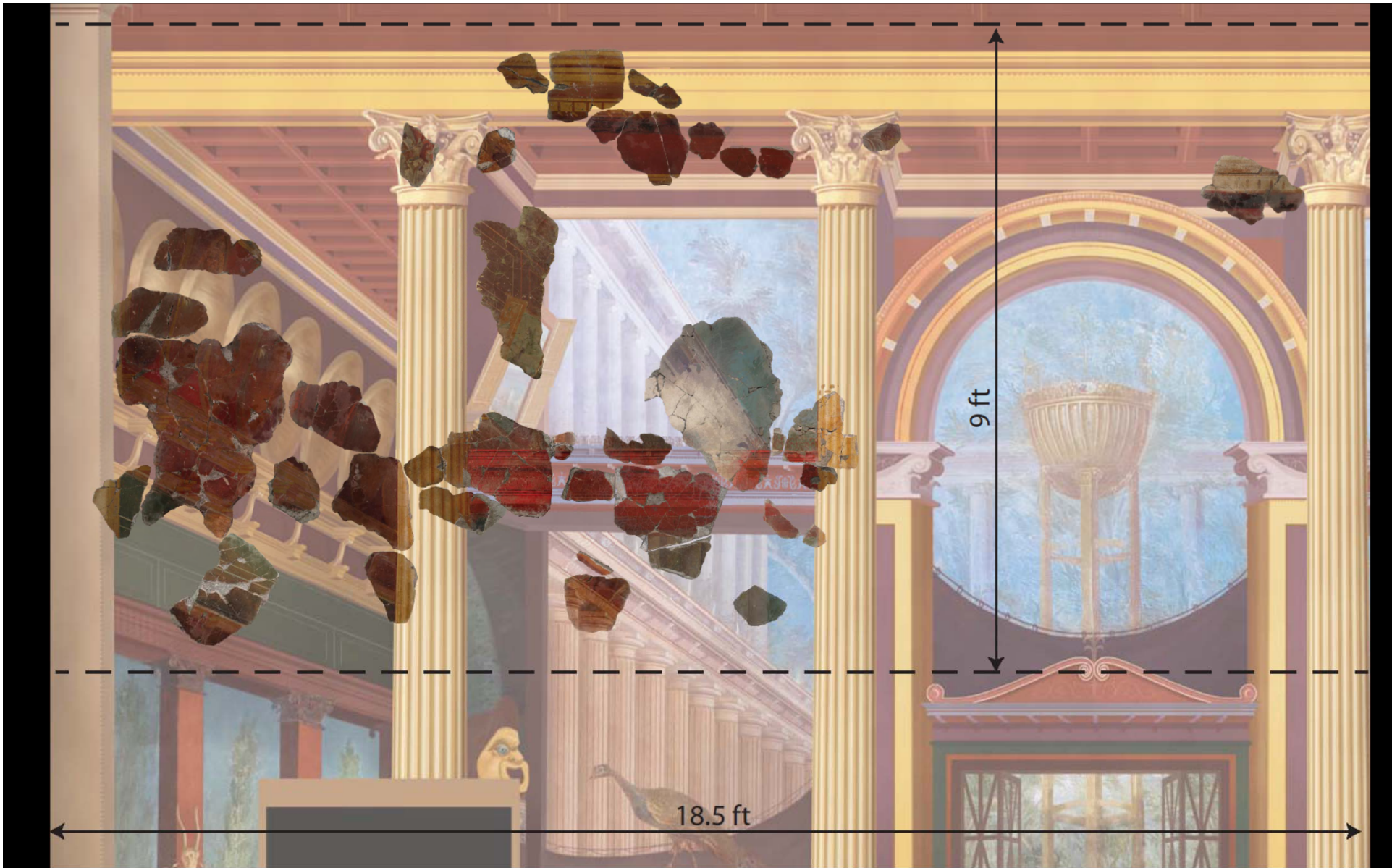
Putting the orphans back in place—digitally!



Reconstruction of the entire wall.



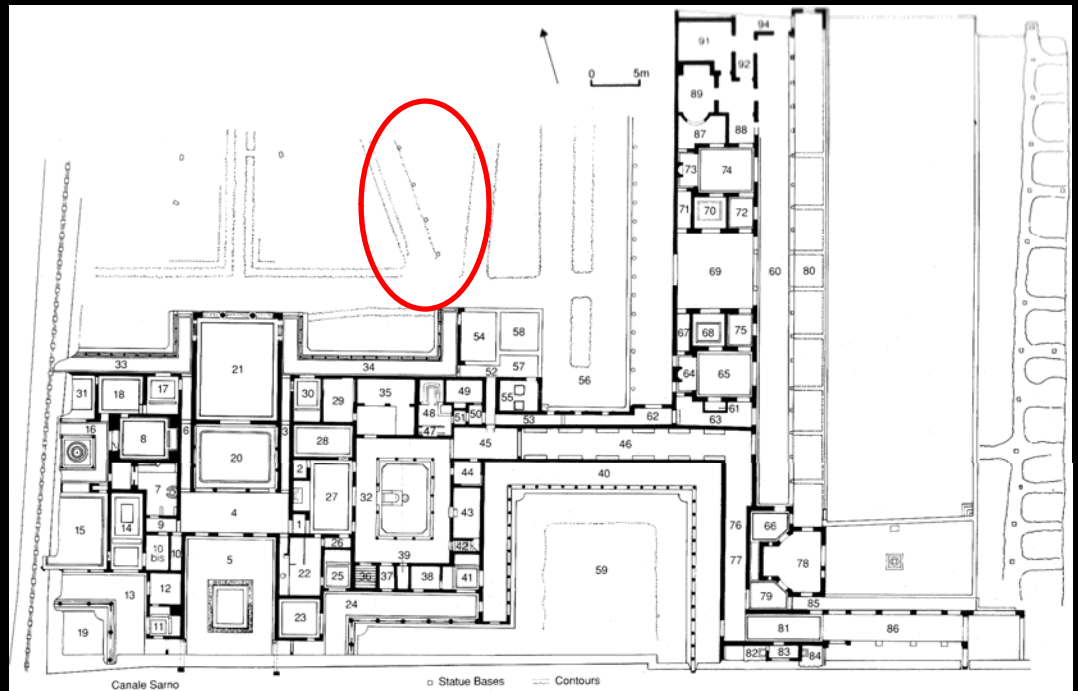
Working of fragments from oecus 15



More opfans find a home!



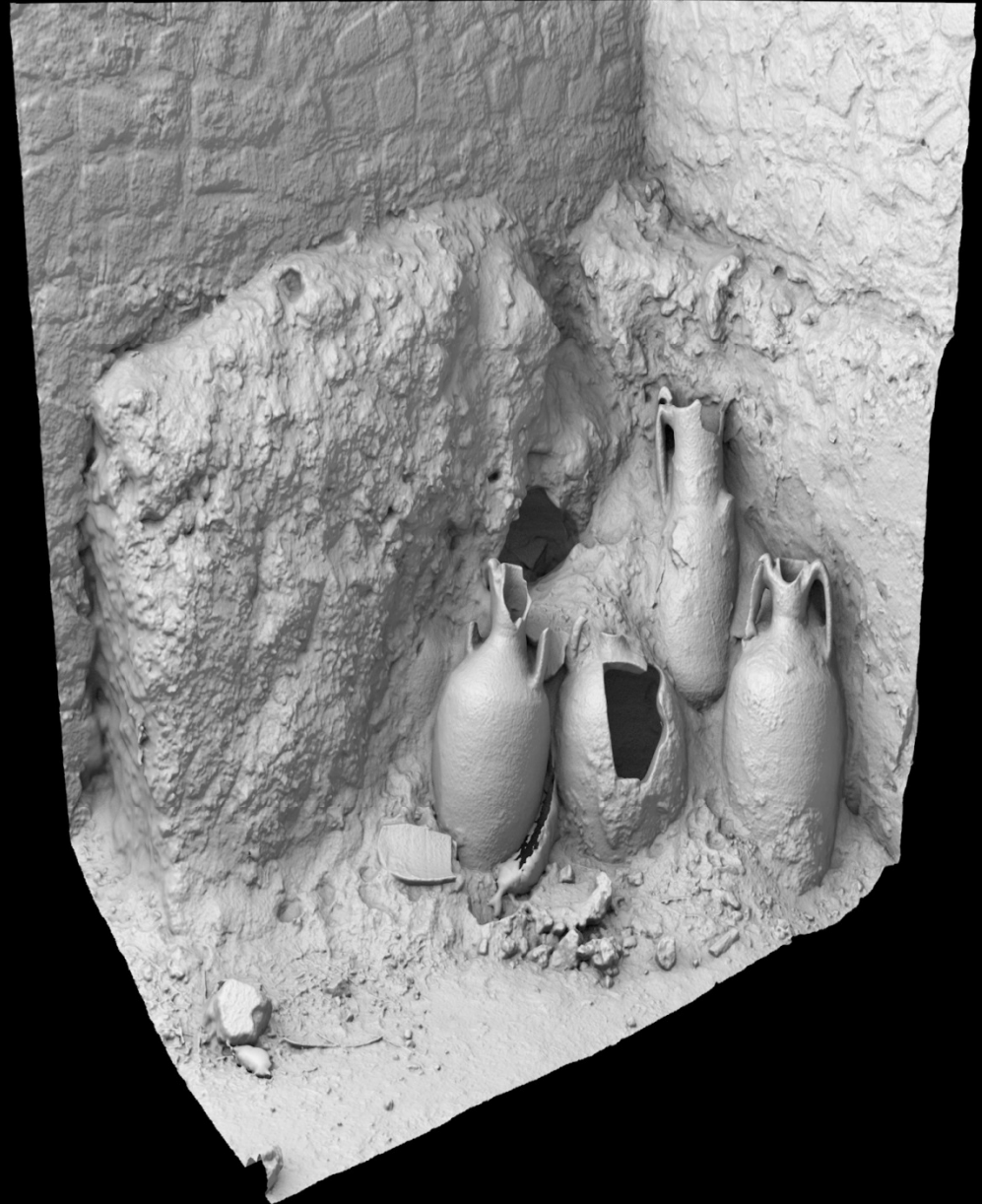
The excitement of discovery: 1975



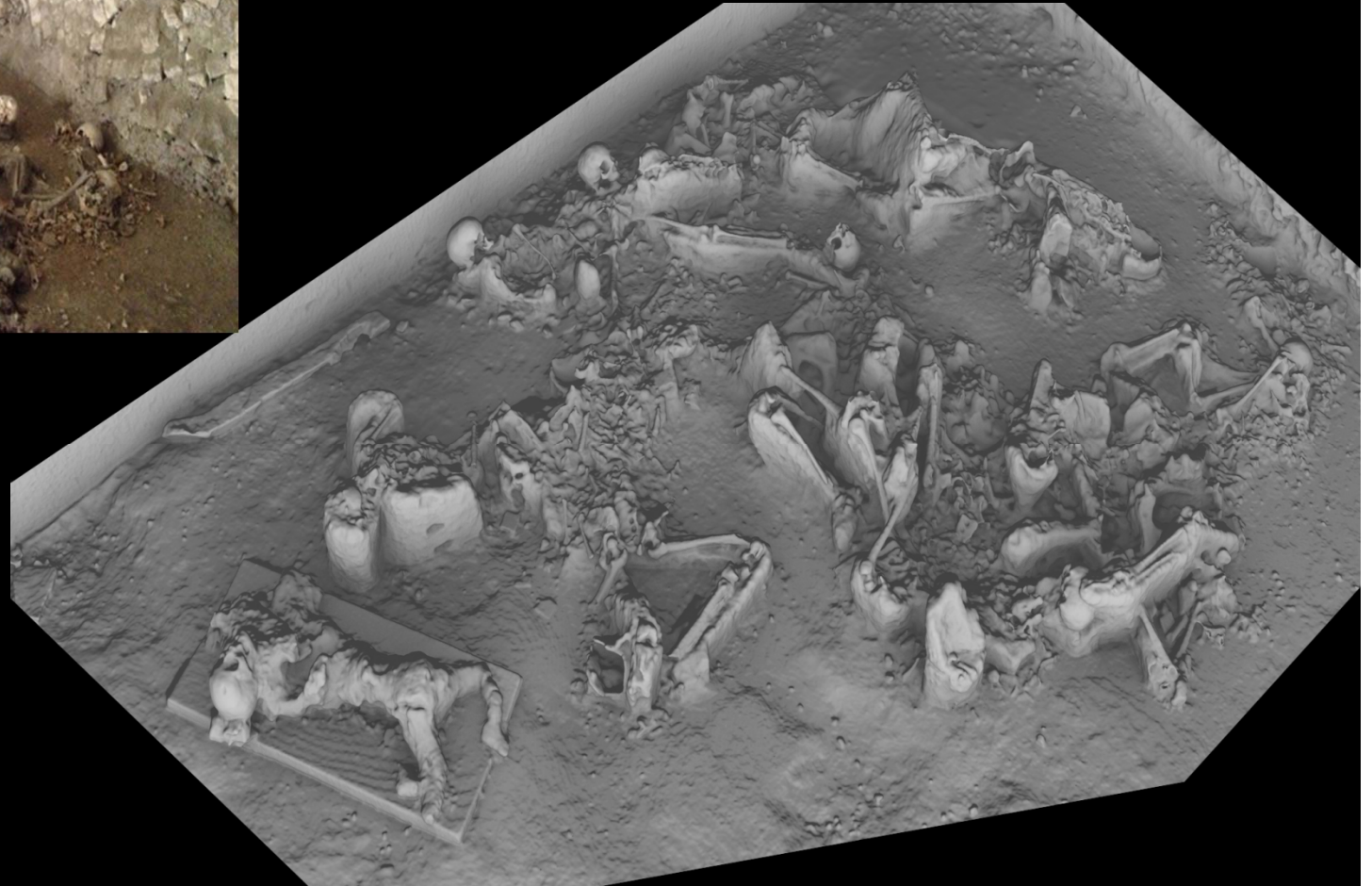


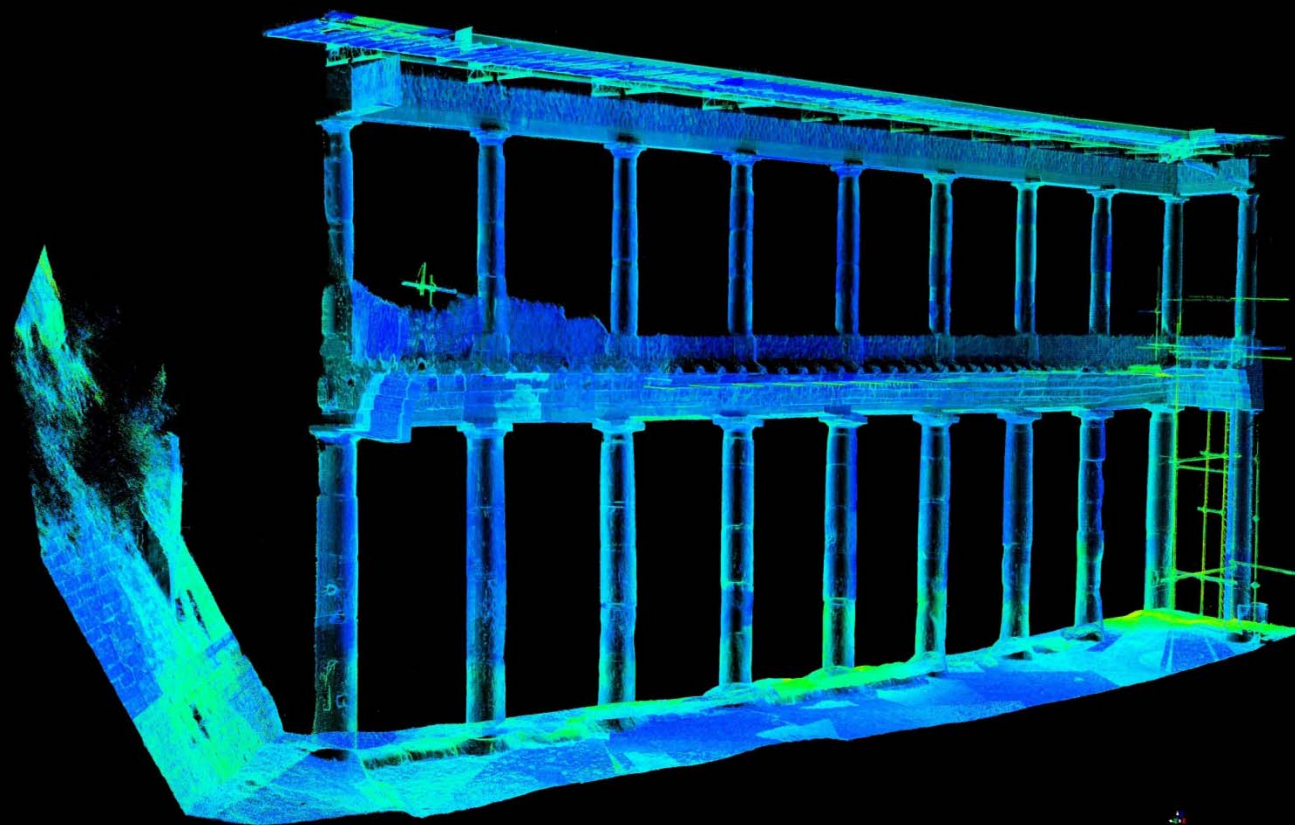
Laser-scanning in Villa B, 2014

Accuracy: 5 millimeters



Laser-scanning the skeletons of Villa B





Laser scan of the north wing of Oplontis B: an accurate 3D plan at last!