

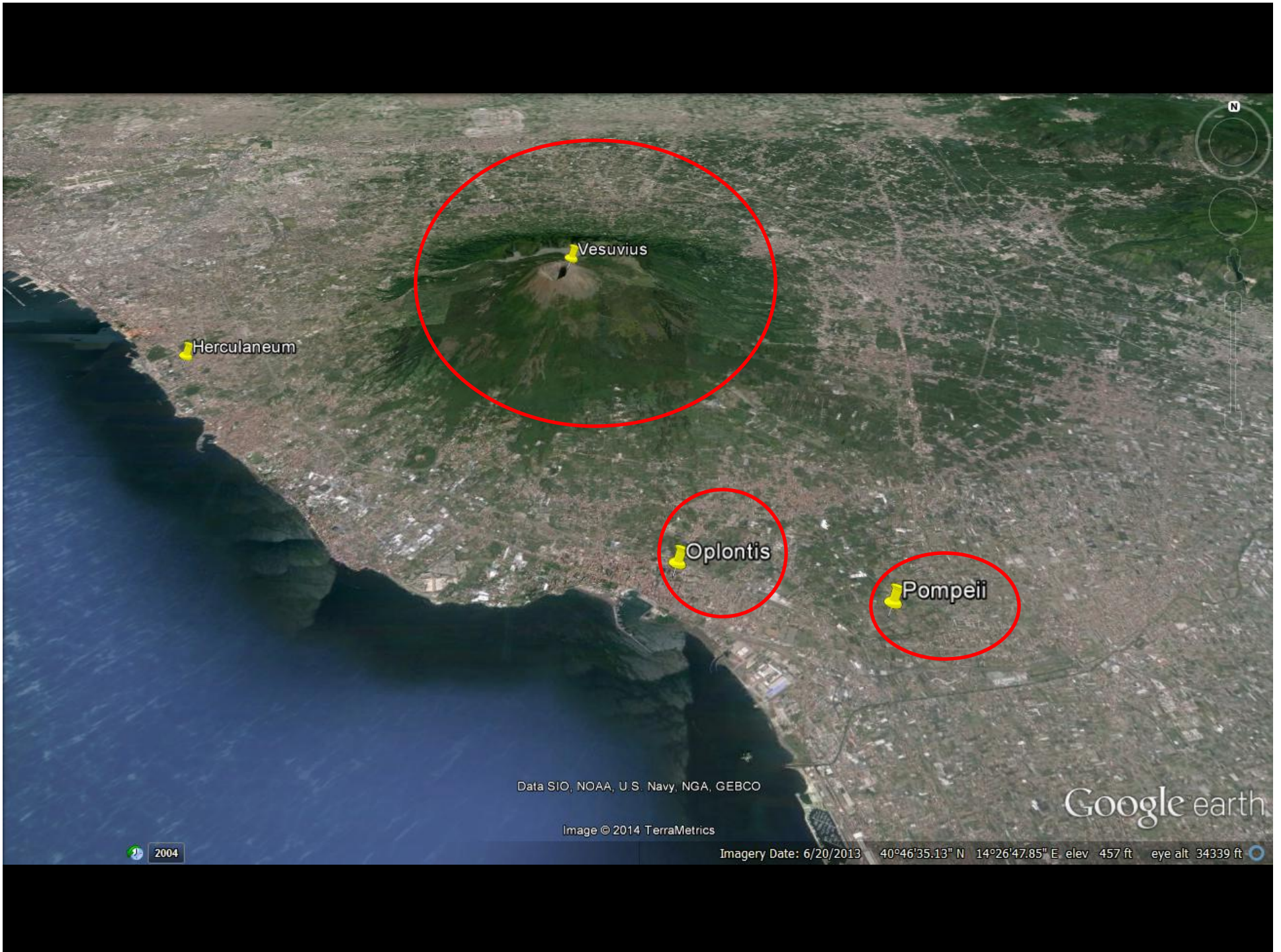


# The Villas of Oplontis

The Ancient Setting

The University of Texas at Austin

[www.oplontisproject.org](http://www.oplontisproject.org)



Vesuvius

Herculaneum

Oplontis

Pompeii

Data SIO, NOAA, U.S. Navy, NGA, GEBCO

Image © 2014 TerraMetrics

Google earth

2004

Imagery Date: 6/20/2013 40°46'35.13" N 14°26'47.85" E elev 457 ft eye alt 34339 ft



Nero

Poppaea



SECVNDO POPPAEAE

This inscription reads "To Secundus, slave of Poppaea" and may mean that Villa A belonged to Nero's second wife.



A painting from a house of Pompeii showing a luxury villa like Villa A, perched on a cliff. . .



The two villas of Oplontis, under the modern town of Torre Annunziata



*Villa of Poppea, Naples 2009*

Villa A as tourists see it today. Walking down a 30-foot stairway.



Remains of ancient villas under the town of Torre Annunziata



The ancient coastline. . .

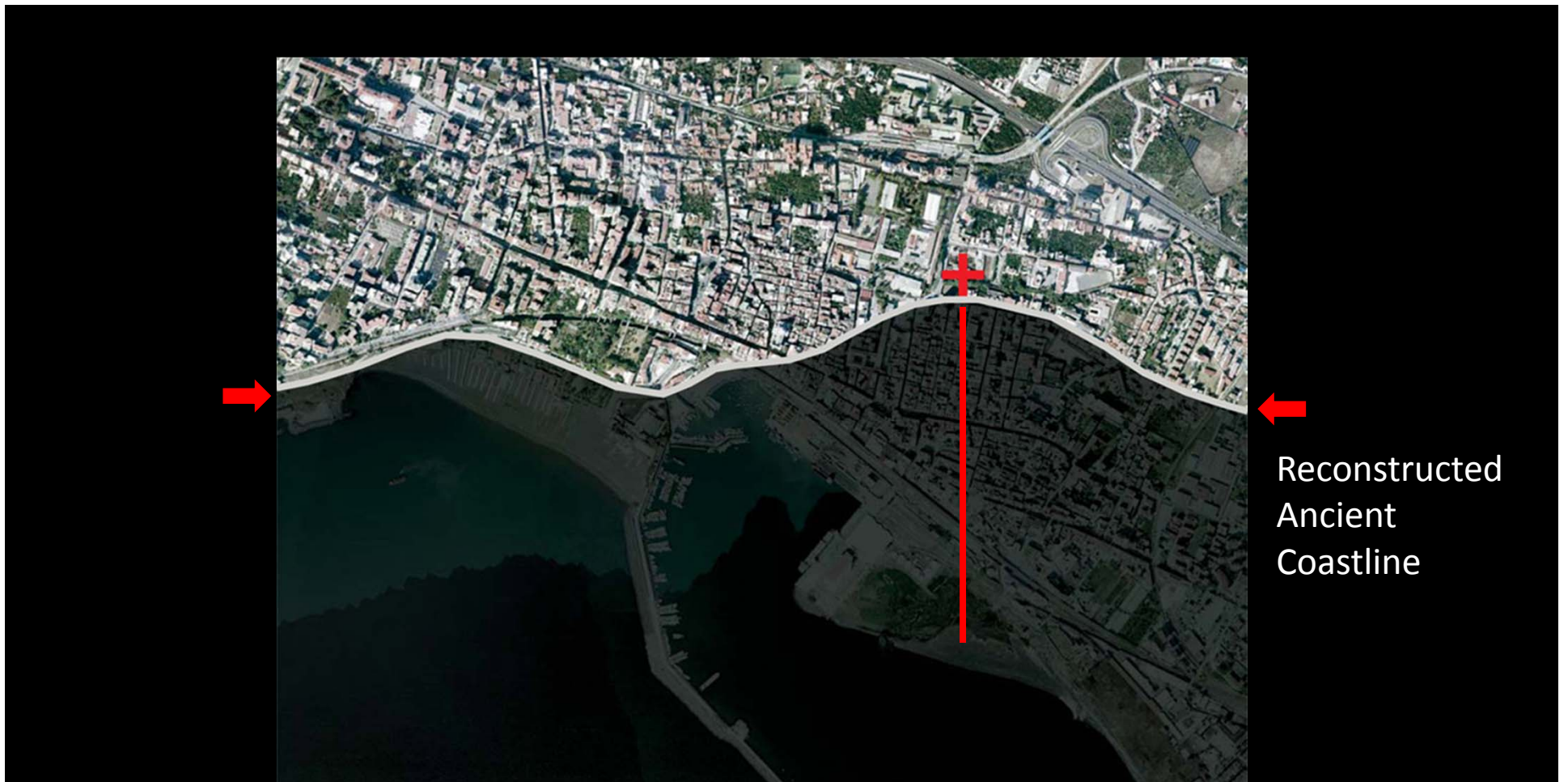
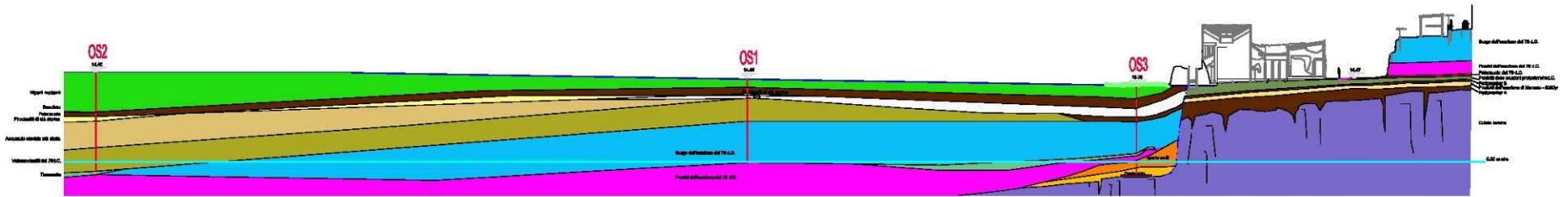


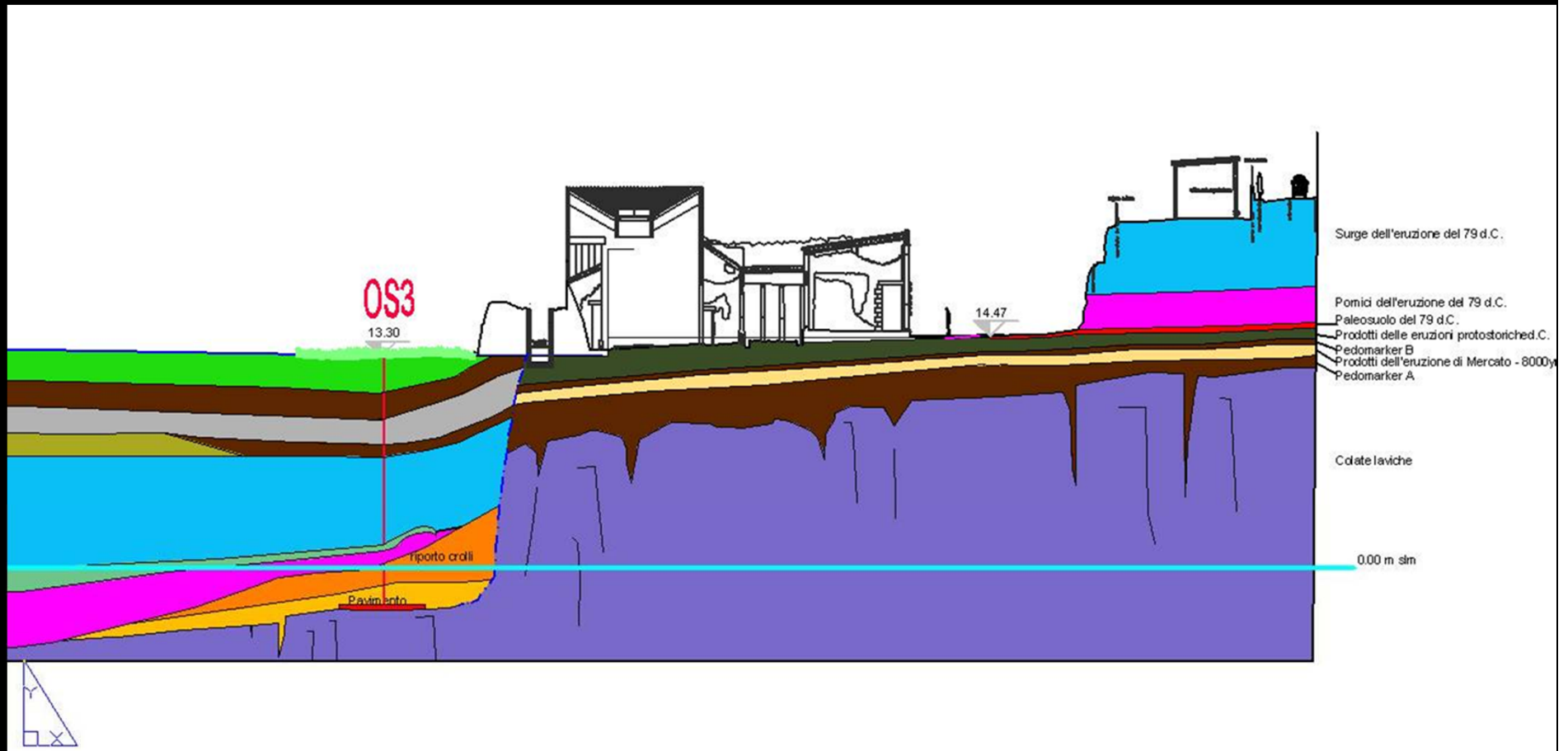


Archaeological coring used to reconstruct the ancient landscape



# Oplontis – Villa di Poppea – Geoarchaeological Section

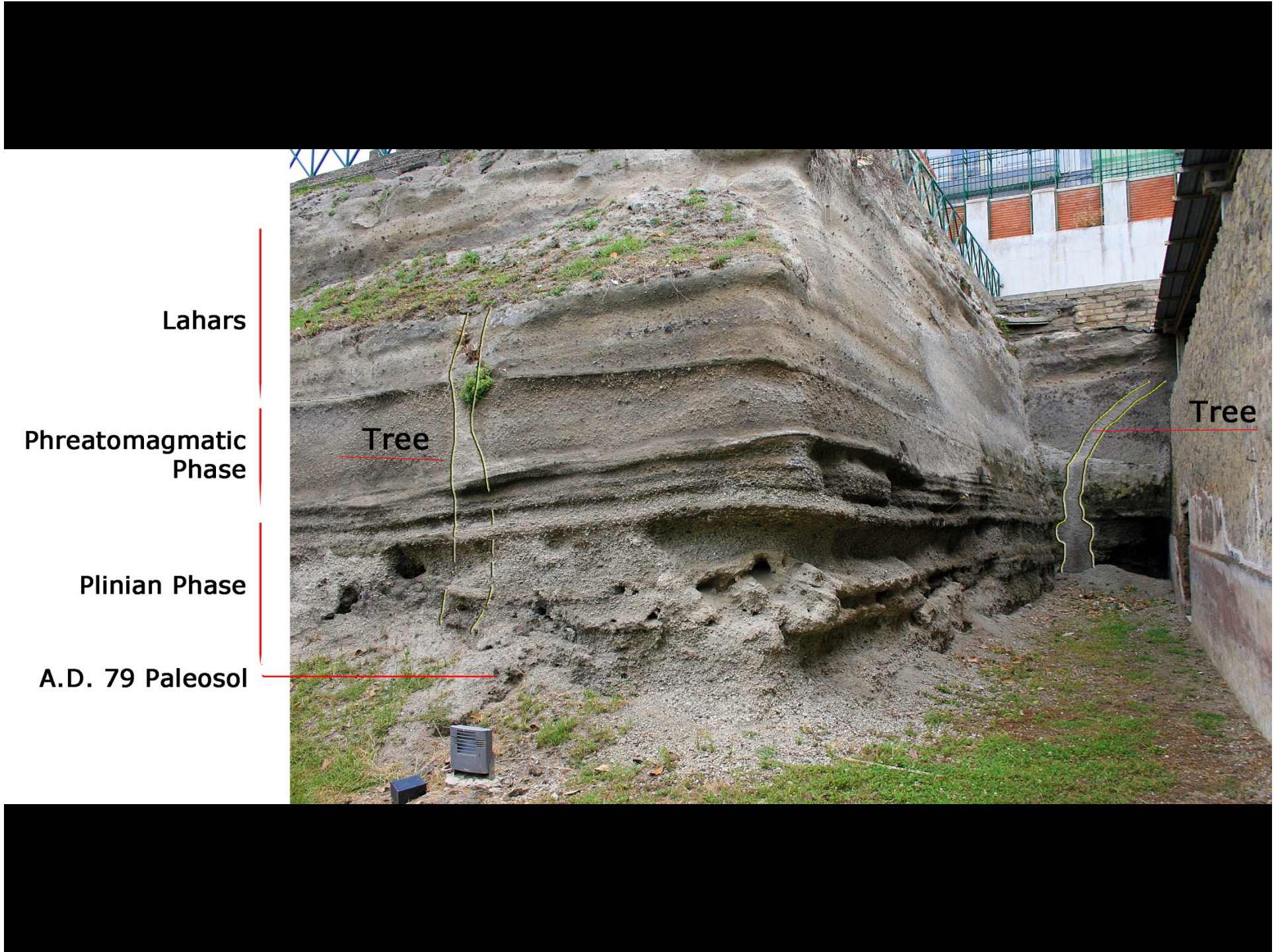




Villa A before the eruption—perched on a 45 foot cliff.

The pink represents the pumice fall from the AD 79 eruption of Vesuvius.

The blue represents the second event: hardened ash. Over 30 feet of material!



Lahars

Phreatomagmatic  
Phase

Plinian Phase

A.D. 79 Paleosol

Tree

Tree



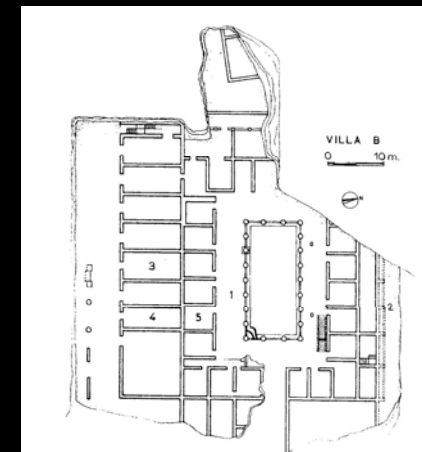
What Villa A looked like from a boat

A photo mural of this courtyard will set the scene.



Oplontis B: a commercial center only 6-10 feet above the ancient sea level.

L. CRS. TER





Hundreds of wine-jars (Dressel 2-4 amphorae) stacked to dry



Several of the 54 skeletons of victims who sought refuge in Oplontis B





Skeleton no. 27, with coins and jewelry



Some of the jewelry found on the skeletons

